

# Barracuda NG Firewall

Scalable Security for the Enterprise



Enterprise networks grow larger and more complex every day - and more critical to key business operations. The Barracuda NG Firewall is an essential tool to **optimize the performance, security, and availability of today's dispersed enterprise WANs.**

- ✓ Security
- Storage
- Application Delivery
- Productivity



## The Barracuda Advantage

### Effective WAN Management

- Application-based traffic prioritization across the WAN
- Intelligent uplink balancing
- Intelligent traffic re-prioritization on uplink loss

### Enterprise Readiness

- Industry-leading centralized management
- WAN optimization
- Global WAN monitoring with Barracuda NG Earth

### Scalable Security

- Cloud Enablement and secure WAN Virtualization
- Drag-and-drop VPN graphical tunnel interface

## Product Spotlight

- Powerful next-generation network firewall
- Advanced Threat Detection
- Built-in web security and IDS/IPS
- Dynamic mesh site-to-site VPN
- Full application visibility and granular control
- Intelligent traffic regulation including application-based provider selection
- Tightly integrated Quality of Service (QoS) and link balancing
- Centralized management of all functionality
- Template-based and role-based configuration



## Integrated Next-Generation Security

The Barracuda NG Firewall is designed and built from the ground up to provide comprehensive, next-generation firewall capabilities. Cloud-hosted content filtering and reporting offload compute-intensive tasks to the cloud for greater resource efficiency and throughput. Based on application visibility, user-identity awareness, intrusion prevention, and centralized management, the Barracuda NG Firewall is the ideal solution for today's dynamic enterprises.



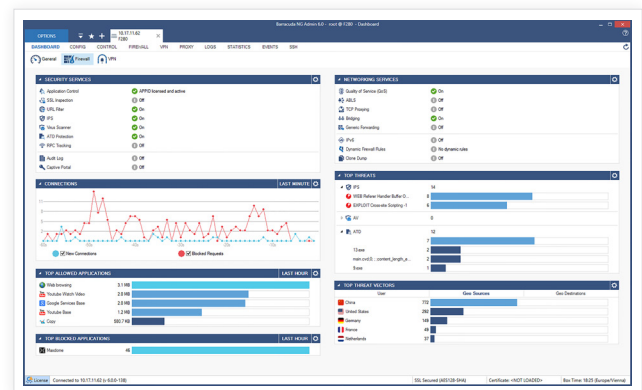
## True Enterprise Readiness

The Barracuda NG Firewall meets the enterprise requirements for massive scalability and efficient management across distributed networks. Integrated WAN optimization and dedicated centralized management appliances enable organizations to increase system availability while keeping administrative time and operation costs low.



## Regaining Control of User Activity

The Barracuda NG Firewall restores control to networks made opaque and unmanageable by mobile devices at work, Web 2.0 applications, increasing dispersion, and the growing integration and dependence on cloud-based resources. It extends security coverage beyond network boundaries, and makes it easy to monitor and regulate everything the network and its users are doing.



The Barracuda NG Firewall dashboard provides real-time information and summaries of what is going on in an organization's network.

Recently I tried one of these dedicated products to protect of advanced persistent threats. After one month of extensive monitoring it turned out that our Barracuda NG Firewalls protect our infrastructures so well, that we can continue to focus on actual business problems. Having chosen the right firewall still saves us money and time every day.

Chief Information Officer  
Union of Turkish Bar Associations

## Technical Specs

### Firewall

- Stateful packet inspection and forwarding
- Full user-identity awareness
- Intrusion Detection and Prevention System (IDS/IPS)
- Application control and granular application enforcement
- Interception and decryption of SSL/TLS encrypted applications
- Antivirus and web filtering in single pass mode
- SafeSearch enforcement
- YouTube for Schools support
- Denial of Service protection (DoS/DDoS)
- Spoofing and flooding protection
- ARP spoofing and trashing protection
- DNS reputation filtering
- TCP stream reassembly
- Transparent proxying (TCP)
- NAT (SNAT, DNAT), PAT
- Dynamic rules / timer triggers
- Single object-oriented rule set for routing, bridging, and routed bridging
- Virtual rule test environment

### User Identity Awareness

- Terminal Server Agent
- Domain Controller Agent
- Authentication – supports x.509, NTLM, RADIUS, RSA SecurID, LDAP/LDAPS, Active Directory, TACACS+, SMS Passcode (VPN), local authentication database
- WiFi Access Point Authentication support

### Intrusion Detection and Prevention

- Protection against exploits, threats and vulnerabilities
- Packet anomaly and fragmentation protection
- Advanced anti-evasion and obfuscation techniques
- Automatic signature updates

### Traffic Optimization

- Link monitoring, aggregation, and failover
- Dynamic routing
- Application-based provider selection
- Traffic shaping and QoS
- On-the-fly flow reprioritization
- Stream and packet compression
- Byte-level data deduplication
- Protocol optimization (SMBv2)

### Advanced Threat Detection

- Dynamic, on-demand analysis of malware programs (sandboxing)
- Dynamic analysis of documents with embedded exploits (PDF, Office, etc.)
- Detailed forensics for both, malware binaries and web threats (exploits)
- Support for multiple operating systems (Windows, Android, etc.)
- Flexible malware analysis in the cloud

### VPN

- Drag & drop VPN tunnel configuration
- Secure site-to-site, client-to-site VPN
- Dynamic mesh site-to-site VPN
- Supports AES-128/256, 3DES, DES, Blowfish, CAST, null ciphers
- Private CA or external PKI
- VPN certified (basic interoperability)
- Application-aware traffic routing
- IPsec VPN / SSL VPN / TINA VPN/ L2TP / PPTP
- Network Access Control
- iOS and Android mobile device VPN support

### High Availability

- Active-active (requires external load balancer) or active-passive
- Transparent failover without session loss
- Network notification of failover
- Encrypted HA communication

### Central Management Options

- Barracuda NG Control Center
  - Unlimited firewalls
  - Support for multi-tenancy
  - Multi-administrator support & RCS

### Infrastructure Services

- DHCP server, relay
- SIP, HTTP, SSH, FTP proxies
- SNMP and IPFIX support
- DNS Cache
- SMTP gateway and SPAM filter
- Wi-Fi (802.11n) access point on selected models

### Protocol Support

- IPv4, IPv6
- BGP/OSPF/RIP
- VoIP (H.323, SIP, SCCP [skinny])
- RPC protocols (ONC-RPC, DCE-RPC)
- 802.1q VLAN

## Support Options

### Barracuda Energize Updates

- Standard technical support
- Firmware updates
- IPS signature updates
- Application control definition updates
- Web filter updates

### Instant Replacement Service

- Replacement unit shipped next business day
- 24/7 technical support
- Free hardware refresh every four years

## Security Options

- Advanced Threat Detection
- Web Filter
- Malware Protection

- Clientless SSL VPN
- Network Access Control (NAC) clients validating client's workstation health status

MODEL COMPARISON	F10	F100 F101	F200 F201	F280	F300 F301	F380	F400 SUBMODELS		F600 SUBMODELS			F800 SUBMODELS			F900 SUBMODELS			F1000 SUBMODELS		
							STD	F20	C10 C20	F10 F20	E20	CCC	CCF	CCE	CCC	CCE	CFE	CE0	CE2	CFE
<b>CAPACITY</b>																				
Firewall Throughput <sup>1</sup>	300 Mbps	300 Mbps	650 Mbps	1.6 Gbps	680 Mbps	3.8 Gbps	5.0 Gbps		16.3 Gbps <sup>5</sup>			19.6 Gbps <sup>5</sup>			22.2 Gbps <sup>5</sup>			40 Gbps <sup>5</sup>		
VPN Throughput <sup>2</sup>	85 Mbps	85 Mbps	120 Mbps	310 Mbps	370 Mbps	750 Mbps	960 Mbps		2.3 Gbps <sup>5</sup>			6.8 Gbps <sup>5</sup>			7.6 Gbps <sup>5</sup>			10 Gbps <sup>5</sup>		
IPS Throughput <sup>1</sup>	60 Mbps	60 Mbps	115 Mbps	450 Mbps	125 Mbps	1.1 Gbps	1.5 Gbps		3.9 Gbps <sup>5</sup>			4.8 Gbps <sup>5</sup>			5.4 Gbps <sup>5</sup>			10 Gbps <sup>5</sup>		
Concurrent Sessions	2,000	8,000	35,000	100,000	70,000	200,000	310,000		2,000,000 <sup>5</sup>			2,500,000 <sup>5</sup>			2,800,000 <sup>5</sup>			4,000,000 <sup>5</sup>		
New Session/s	1,000	1,500	2,500	9,000	2,500	9,500	16,000		110,000 <sup>5</sup>			150,000 <sup>5</sup>			160,000 <sup>5</sup>			200,000 <sup>5</sup>		
<b>HARDWARE</b>																				
Form Factor	Desktop mini		Desktop			1U rack mount						2U rack mount								
Copper Ethernet NICs	4x1 GbE	4x1 GbE	4x1 GbE	4x1 GbE	4x1 GbE+ 4x1 10/100	8x1 GbE	8x1 GbE	8x1 GbE	12x1 GbE	8x1 GbE	8x1 GbE	20x1 GbE	12x1 GbE	12x1 GbE	24x1 GbE	16x1 GbE	8x1 GbE	16x1 GbE	32x1 GbE	16x1 GbE
1 GbE Fiber NICs (SFP)							4x1 GbE	4x1 GbE		4x1 GbE		4x1 GbE				8x1 GbE				16x1 GbE
10 GbE Fiber NICs (SFP+)											2x10 GbE		4x10 GbE		4x10 GbE	4x10 GbE	4x10 GbE	4x10 GbE	8x10 GbE	8x10 GbE
Power Supply	Single (ext.)			Single			Dual <sup>6</sup>		Single <sup>7</sup>			Dual <sup>6</sup>								
<b>FEATURES</b>																				
Firewall	●	●	●	●	●	●	●	●	●	●	●	●	●	●	●	●	●	●	●	●
Application Control <sup>3</sup>	●	●	●	●	●	●	●	●	●	●	●	●	●	●	●	●	●	●	●	●
IPS <sup>3</sup>	●	●	●	●	●	●	●	●	●	●	●	●	●	●	●	●	●	●	●	●
Dynamic Routing	●	●	●	●	●	●	●	●	●	●	●	●	●	●	●	●	●	●	●	●
VPN	●	●	●	●	●	●	●	●	●	●	●	●	●	●	●	●	●	●	●	●
SSL Interception			●	●	●	●	●	●	●	●	●	●	●	●	●	●	●	●	●	●
WAN Optimization			●	●	●	●	●	●	●	●	●	●	●	●	●	●	●	●	●	●
Spam Filter			●	●	●	●	●	●	●	●	●	●	●	●	●	●	●	●	●	●
Web Filter		●	●	●	●	●	●	●	●	●	●	●	●	●	●	●	●	●	●	●
Malware Protection		Optional	Optional	Optional	Optional	Optional	Optional	Optional	Optional	Optional	Optional	Optional	Optional	Optional	Optional	Optional	Optional	Optional	Optional	Optional
Advanced Threat Detection <sup>4</sup>			Optional	Optional	Optional	Optional	Optional	Optional	Optional	Optional	Optional	Optional	Optional	Optional	Optional	Optional	Optional	Optional	Optional	Optional
Clientless SSL VPN			Optional	Optional	Optional	Optional	Optional	Optional	Optional	Optional	Optional	Optional	Optional	Optional	Optional	Optional	Optional	Optional	Optional	Optional
Network Access Control			Optional	Optional	Optional	Optional	Optional	Optional	Optional	Optional	Optional	Optional	Optional	Optional	Optional	Optional	Optional	Optional	Optional	Optional

<sup>1</sup> Measured with large packets (MTU1500)    <sup>2</sup> VPN throughput using AES128 NOHASH    <sup>3</sup> Requires Energize Updates subscription.    <sup>4</sup> Requires Malware Protection subscription.    <sup>5</sup> Measured with 10GbE fiber ports  
<sup>6</sup> Internal dual hot swap power supply    <sup>7</sup> Internal dual hot swap power supply optional.    Specifications subject to change without notice.